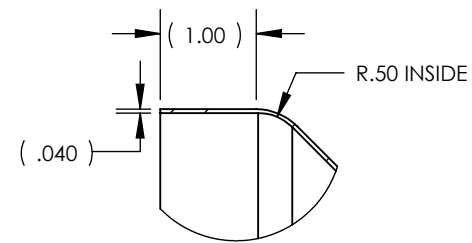
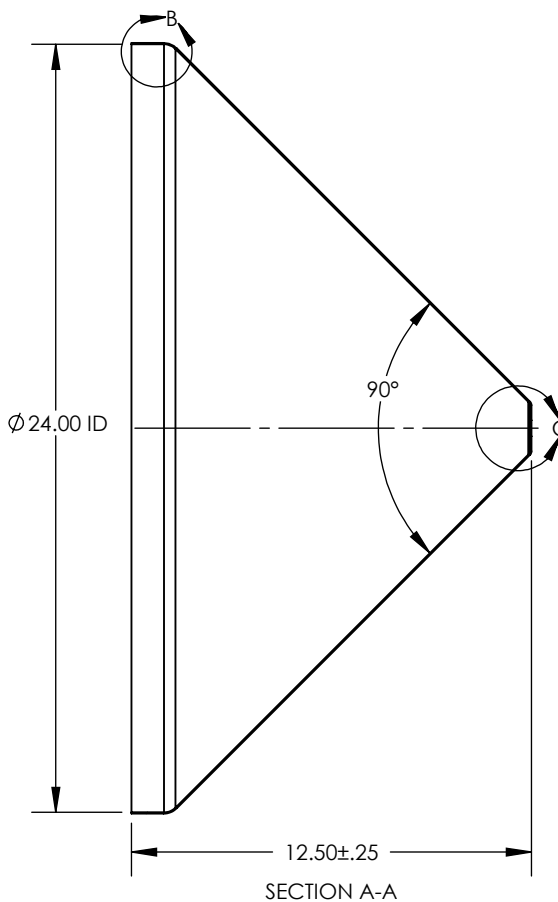
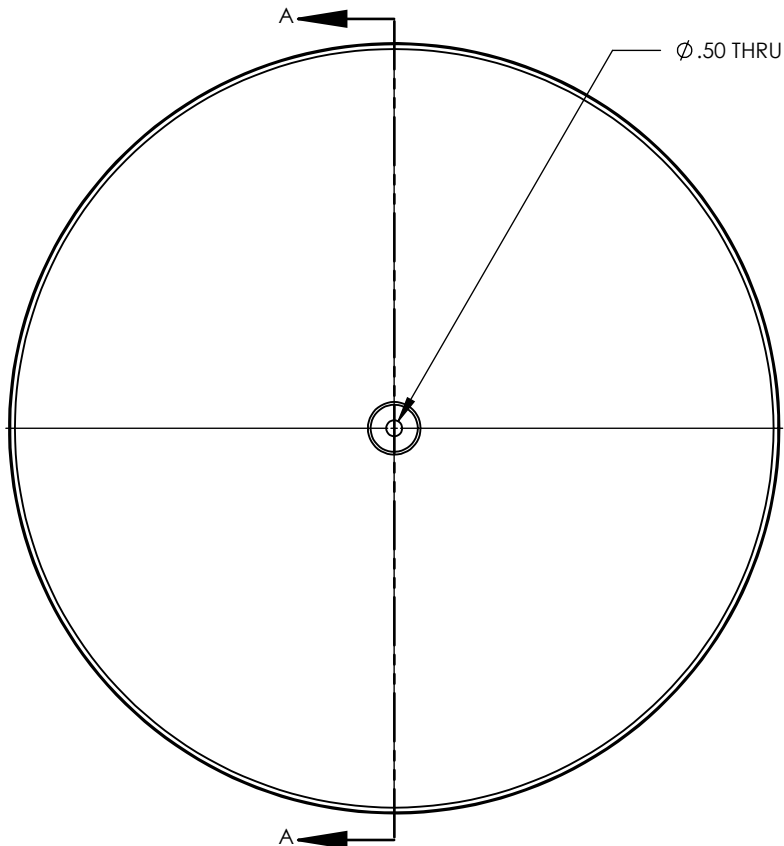


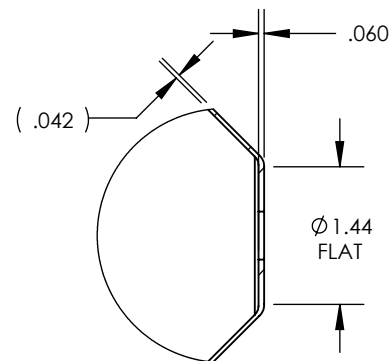
NOTES UNLESS OTHERWISE SPECIFIED

- 1. MATERIAL: 304 STAINLESS STEEL
- 2. FINISH: NO METAL FINISHING REQUIRED. THE FINAL FINISH SHALL BE THE RESULT OF THE PROCESSES USED TO FABRICATE THE SHAPE.
- 3. ESTIMATED INTERNAL VOLUME: 10.2 US LIQUID GALLONS. (2362 In<sup>3</sup>)

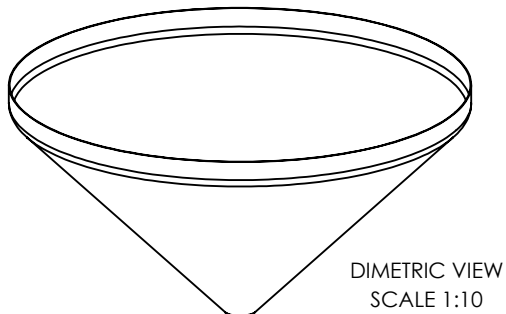
| REVISIONS |  |           |          |      |
|-----------|--|-----------|----------|------|
| REV.      | DESCRIPTION  | DATE      | APPROVED | ZONE |
| A         | INITIAL RELEASE FOR MANUFACTURING                                | 1MAR2016  | B. KEEL  |      |
| B         | CHANGED REFERENCE THICKNESS DIM ON STR WALL FROM 0.054 TO 0.040" | 19SEP2018 | R.DAVIS  |      |



DETAIL B  
SCALE 1 : 2



DETAIL C  
SCALE 1 : 2



DIMETRIC VIEW  
SCALE 1:10

UNLESS OTHERWISE SPECIFIED:  
 1. DO NOT SCALE DRAWING  
 2. DIMENSIONS ARE IN INCHES  
 3. TOLERANCE:  
 FRACTIONAL  $\pm .25$   
 X.X  $\pm .1$   
 X.XX  $\pm .03$   
 X.XXX  $\pm .010$   
 ANGULAR:  $\pm 2$  DEG.  
 4. INTERPRET DRAWING PER ASME-Y14.5M-1994 STANDARDS  
 5. THIRD ANGLE PROJECTION  
 6. REMOVE BURRS & BREAK ALL SHARP EDGES WITH R0.03  $\pm .02$

|           | NAME    | DATE      |
|-----------|---------|-----------|
| DRAWN     | B. KEEL | 16MAR2016 |
| CHECKED   |         |           |
| ENG APPR. |         |           |
| MFG APPR. |         |           |
| Q.A.      |         |           |

**PROPRIETARY AND CONFIDENTIAL**  
 THE INFORMATION CONTAINED WITHIN THIS DRAWING IS THE SOLE PROPERTY OF TOLEDO METAL SPINNING COMPANY. ANY REPRODUCTION IN PART OR AS A WHOLE WITHOUT WRITTEN PERMISSION OF TOLEDO METAL SPINNING COMPANY IS PROHIBITED.

**TOLEDO METAL SPINNING COMPANY**  
 EST. 1929

TITLE:  
 24" DIAMETER 304SS HOPPER WITH 1" STR WALL; 90 DEGREE INCLUDED ANGLE CONICAL SECTION

| SIZE       | DRAWING NUMBER | REV          |
|------------|----------------|--------------|
| A          | TMS240116-90   | B            |
| SCALE: 1:6 |                | WEIGHT: 8.90 |
|            |                | SHEET 1 OF 1 |