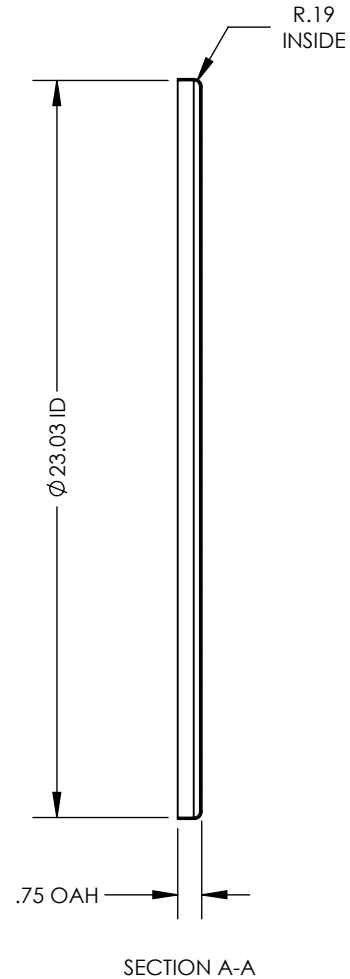
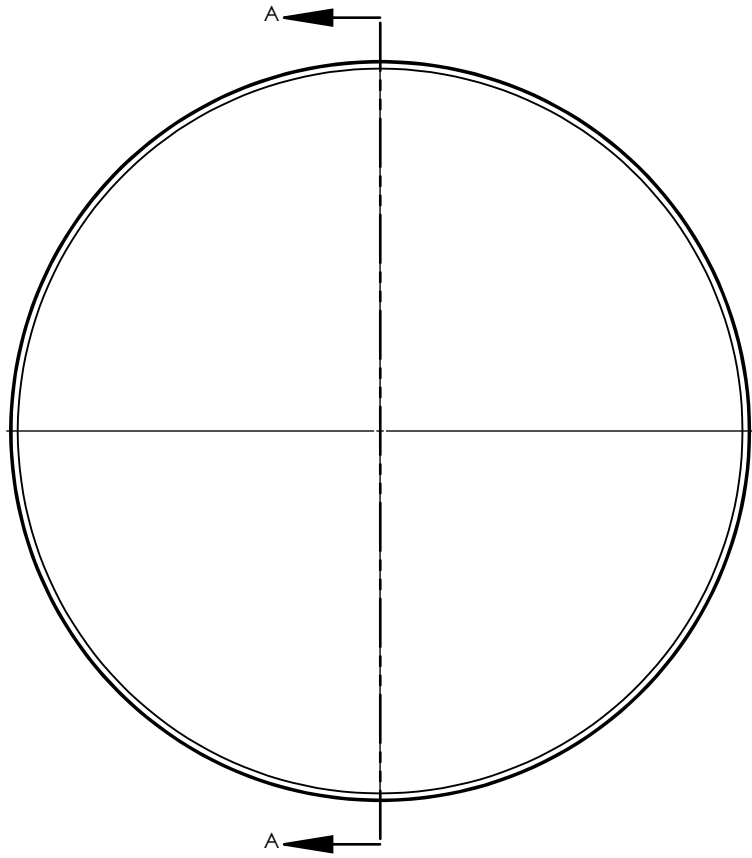


NOTES UNLESS OTHERWISE SPECIFIED

- 1. PARENT MATERIAL: 316 STAINLESS STEEL, 16 GAUGE (0.060" THICK)
- 2. PART IS SEAMLESS, FORMED FROM SHEET METAL WITHOUT WELDS.
- 3. FINISH: NO METAL FINISHING REQUIRED. THE FINAL FINISH SHALL BE THE RESULT OF THE PROCESSES USED TO FABRICATE THE SHAPE, RESULTING IN AN ESTIMATED SURFACE ROUGHNESS OF 80 Ra.

| REVISIONS | | | |
|-----------|-----------------------------------|---------|----------|
| REV. | DESCRIPTION | DATE | APPROVED |
| A | INITIAL RELEASE FOR MANUFACTURING | MAR2019 | R.DAVIS |



SCALE 1 : 10

UNLESS OTHERWISE SPECIFIED:
 1. DO NOT SCALE DRAWING
 2. DIMENSIONS ARE IN INCHES
 3. TOLERANCE:
 FRACTIONAL ± .25
 X.X ±.1
 X.XX ±.03
 X.XXX ±.010
 ANGULAR: ±2 DEG.
 4. INTERPRET DRAWING PER ASME-Y14.5M-1994 STANDARDS
 5. THIRD ANGLE PROJECTION
 6. REMOVE BURRS & BREAK ALL SHARP EDGES WITH R0.03 ±.02

| | NAME | DATE |
|-----------|---------|---------|
| DRAWN | R.DAVIS | MAR2019 |
| CHECKED | | |
| ENG APPR. | | |
| MFG APPR. | | |
| Q.A. | | |

PROPRIETARY AND CONFIDENTIAL
 THE INFORMATION CONTAINED WITHIN THIS DRAWING IS THE SOLE PROPERTY OF TOLEDO METAL SPINNING COMPANY. ANY REPRODUCTION IN PART OR AS A WHOLE WITHOUT WRITTEN PERMISSION OF TOLEDO METAL SPINNING COMPANY IS PROHIBITED.

| | | |
|---|---|-----------------|
| TOLEDO METAL SPINNING COMPANY EST. 1929 | | |
| TITLE: TMS 316SS LID | | |
| SIZE A | DRAWING NUMBER TMSL2216-316SS | REV A |
| SCALE: 1:6 | WEIGHT: 7.93 | SHEET 1 OF 1 |