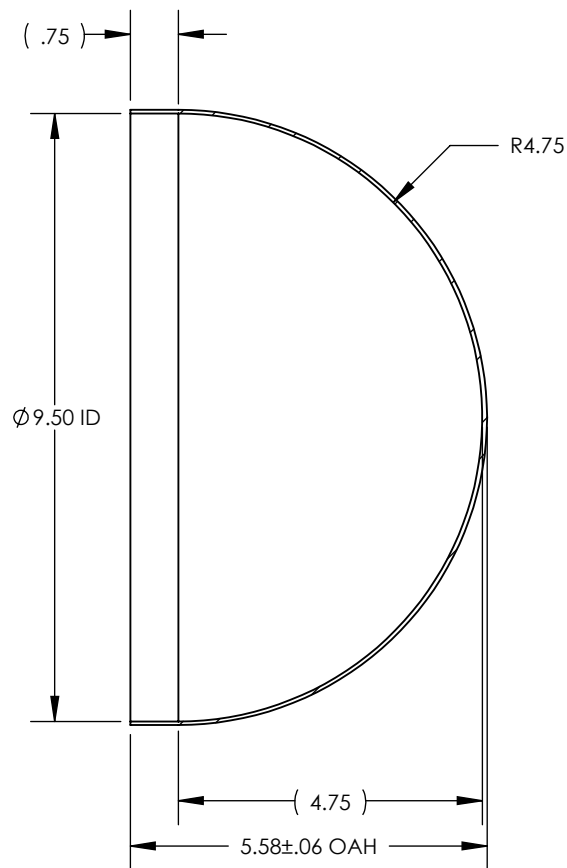


1

- | REVISIONS | | | |
|-----------|-----------------------------------|-----------|------------|
| REV. | DESCRIPTION | DATE | APPROVED |
| | INITIAL RELEASE FOR MANUFACTURING | 16SEP2009 | L.FERNANDO |
| 00 | Updated sheet format. | 22JUN2015 | R.DAVIS |
| A | Updated sheet format. | MAR2019 | R.DAVIS |

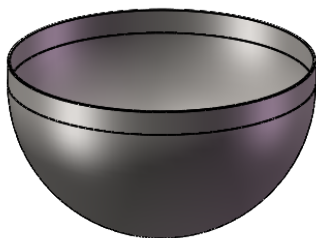


D

C

B

A



UNLESS OTHERWISE SPECIFIED:

1. DO NOT SCALE DRAWING
2. DIMENSIONS ARE IN INCHES
3. TOLERANCE:
FRACTIONAL $\pm .25$
X.X $\pm .1$
X.XX $\pm .03$
X.XXX $\pm .010$
ANGULAR: ± 2 DEG.
4. INTERPRET DRAWING PER
ASME-Y14.5M-1994 STANDARDS
5. THIRD ANGLE PROJECTION
6. REMOVE BURRS & BREAK ALL
SHARP EDGES WITH R0.03 ± 0.02

	NAME	DATE
DRAWN	R.DAVIS	MAR2019
CHECKED		
ENG APPR.		
MFG APPR.		
Q.A.		

PROPRIETARY AND CONFIDENTIAL

THE INFORMATION CONTAINED WITHIN THIS DRAWING IS THE SOLE PROPERTY OF TOLEDO METAL SPINNING COMPANY. ANY REPRODUCTION IN PART OR AS A WHOLE WITHOUT WRITTEN PERMISSION OF TOLEDO METAL SPINNING COMPANY IS PROHIBITED.

TOLEDO METAL SPINNING COMPANY
EST. 1929

TITLE:

HEMISPHERE WITH STRAIGHT WALL

SIZE A	DRAWING NUMBER HM0950-0075		REV A
SCALE: 1:3		WEIGHT: 2.87	SHEET 1 OF 1