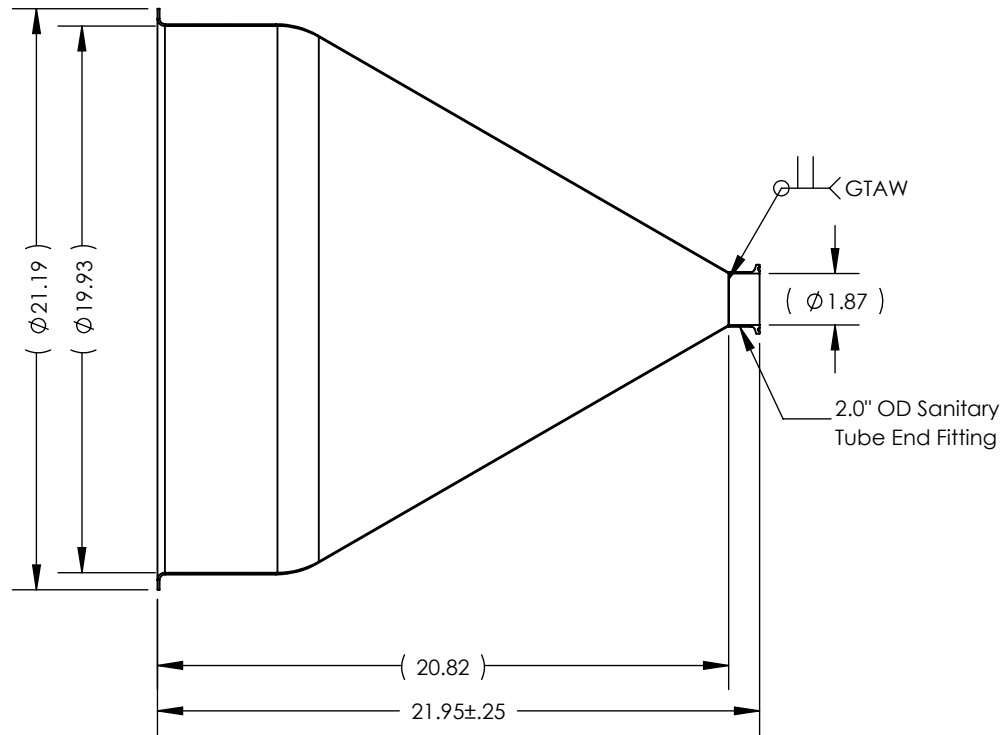
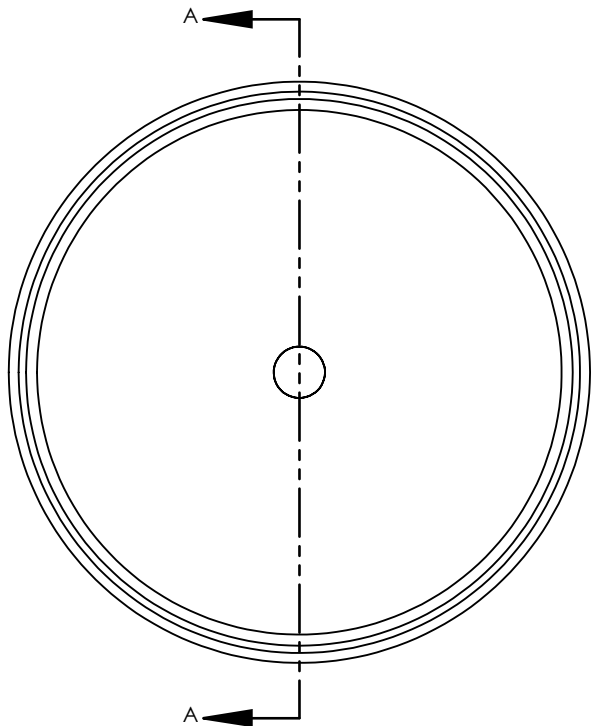


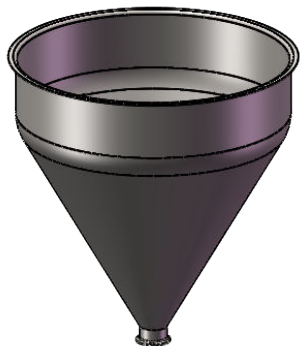
NOTES UNLESS OTHERWISE SPECIFIED

- 1. WELD REQUIREMENTS: MINIMIZED WELD POROSITY AND BE VISUALLY FREE OF CRACKS. WELDS ARE NOT CERTIFIED, TMS ASSUMES NO LIABILITY FOR THE DESIGN REGARDLESS OF ITS USE AND OR METHOD OF INSTALLATION.
- 2. INSIDE BRUSHED FINISH TO 32 Ra.
- 3. OUTSIDE BRUSHED FINISH TO 125 Ra.
- 4. PARENT HOPPER: TMS20514.

REVISIONS			
REV.	DESCRIPTION	DATE	APPROVED
A	INITIAL RELEASE FOR MANUFACTURING	MAR2019	R.DAVIS



SECTION A-A



SCALE 1 : 14

UNLESS OTHERWISE SPECIFIED:  
 1. DO NOT SCALE DRAWING  
 2. DIMENSIONS ARE IN INCHES  
 3. TOLERANCE:  
 FRACTIONAL ± .25  
 X.X ±.1  
 X.XX ±.03  
 X.XXX ±.010  
 ANGULAR: ±2 DEG.  
 4. INTERPRET DRAWING PER ASME-Y14.5M-1994 STANDARDS  
 5. THIRD ANGLE PROJECTION  
 6. REMOVE BURRS & BREAK ALL SHARP EDGES WITH R0.03 ±.02

	NAME	DATE
DRAWN	R.DAVIS	MAR2019
CHECKED		
ENG APPR.		
MFG APPR.		
Q.A.		

**PROPRIETARY AND CONFIDENTIAL**  
 THE INFORMATION CONTAINED WITHIN THIS DRAWING IS THE SOLE PROPERTY OF TOLEDO METAL SPINNING COMPANY. ANY REPRODUCTION IN PART OR AS A WHOLE WITHOUT WRITTEN PERMISSION OF TOLEDO METAL SPINNING COMPANY IS PROHIBITED.

**TOLEDO METAL SPINNING COMPANY**  
 EST. 1929

TITLE:  
 HOPPER WITH WELDED 2.0" TUBE FITTING

SIZE A	DRAWING NUMBER 106010	REV A
SCALE: 1:7	WEIGHT: 13.93	SHEET 1 OF 1