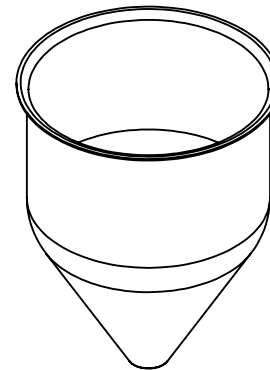
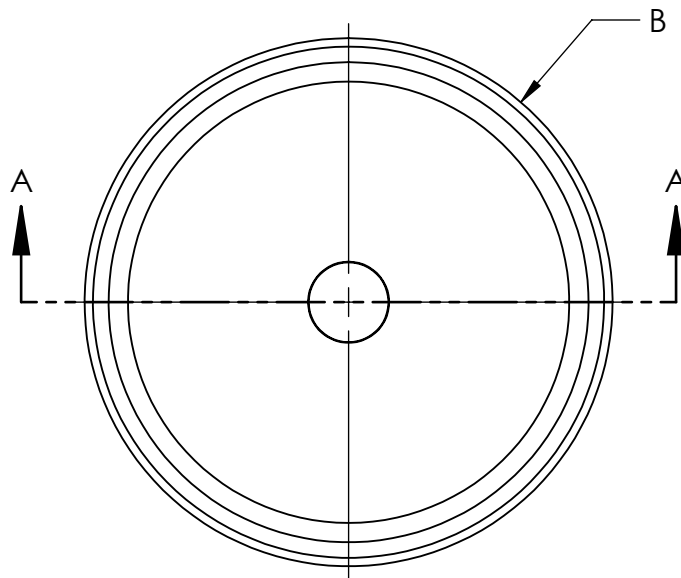


PART # SS 304	PART # SS 316	VOLUME (GALLONS)	A	B	C	D	E	F	G
TMS4316	TMS4316-316SS	0.2	3.91	4.38	2.98	6.00	0.03	0.05	0.50
TMS6414	TMS6414-316SS	0.8	6.25	7.25	4.51	9.30	0.04	0.07	1.00
TMS9314	TMS9314-316SS	1.5	8.85	10.02	2.80	9.30	0.04	0.07	1.68
TMS9914	-	3.0	8.85	10.02	8.50	15.00	0.04	0.07	1.68
TMS12714	TMS12714-316SS	4.9	11.85	13.00	7.10	16.13	0.04	0.07	1.68
TMS121114	-	6.7	11.85	13.00	10.77	19.80	0.04	0.07	1.68
TMS14514	TMS14514-316SS	6.4	14.00	15.13	5.90	16.75	0.04	0.07	1.68
TMS141214	-	10.5	14.00	15.13	11.72	22.50	0.04	0.07	1.68
TMS16314	TMS16314-316SS	7.3	16.00	17.26	3.29	16.25	0.04	0.07	1.68
TMS16914	-	12.0	16.00	17.26	8.80	21.75	0.04	0.07	1.68
TMS20514	TMS20514-316SS	14.7	19.93	21.19	4.33	21.00	0.04	0.07	1.68
TMS201014	-	21.0	19.93	21.19	9.23	25.50	0.04	0.07	1.68
TMS221014	-	23.0	21.09	22.50	8.33	26.00	0.04	0.07	1.68
TMS24614	TMS24614-316SS	25.5	24.00	25.25	5.31	25.50	0.04	0.07	1.68
TMS24914	-	30.5	24.00	25.25	8.41	28.50	0.04	0.07	1.68
TMS32111	TMS32111-316SS	33.0	31.83	N/A	1.00	27.34	0.06	0.09	1.60
TMS36111	TMS36111-316SS	51.1	36.06	N/A	1.00	30.90	0.06	0.09	1.60

NOTES UNLESS OTHERWISE SPECIFIED

- PART IS SEAMLESS, FORMED FROM STAINLESS STEEL SHEET METAL CONTAINING NO WELDS.
- FINISH: AS PRODUCED FROM FORMING PROCESSES.
- PART # 100016, 101016, 100015, & 101015 HAS NO FLANGE.
- ALL HOPPERS CAN HAVE A ROLLED AND WELDED CYLINDER ADDED TO INCREASE THE STRAIGHT WALL LENGTH, WITH OR WITHOUT A FLANGE.
- DIMENSIONS ARE IN INCHES.
- NO SHARP EDGES OR BURRS.



Request a quote online at
www.toledometal spinning.com
 or contact sales at 419-214-3245 or
sales@toledometal spinning.com

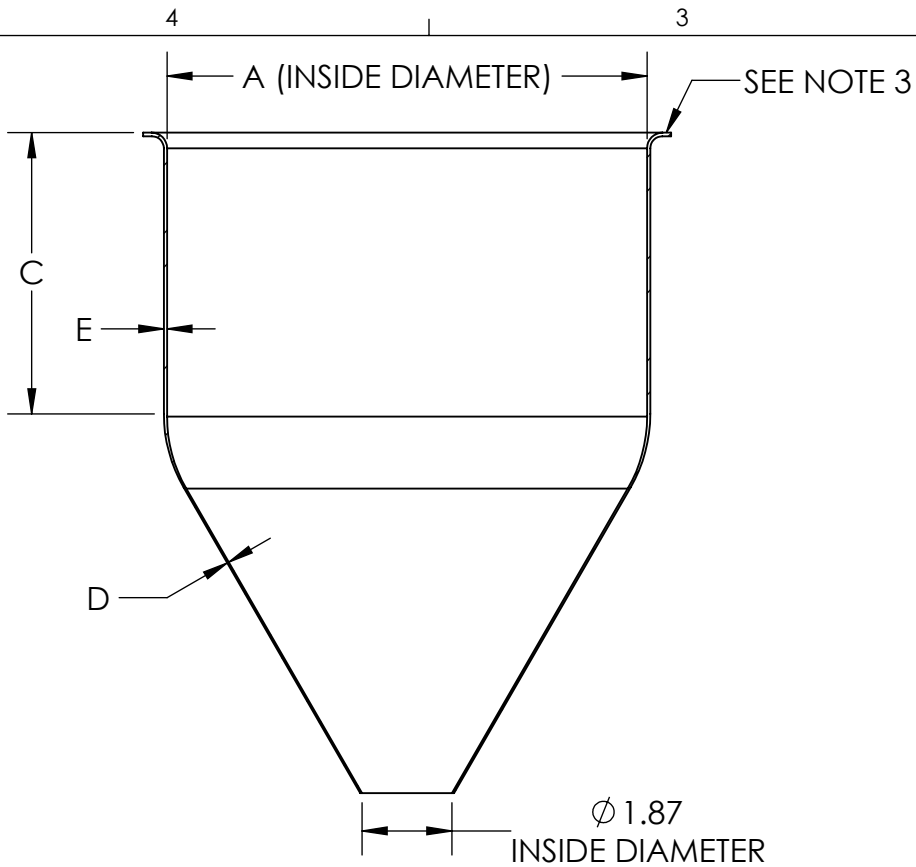
TOLEDO METAL SPINNING EST. 1929

TITLE:
SEAMLESS STAINLESS STEEL HOPPERS

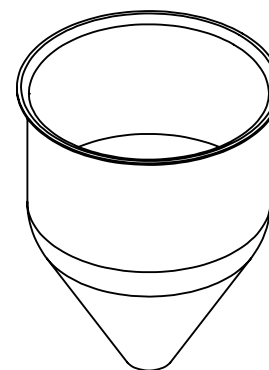
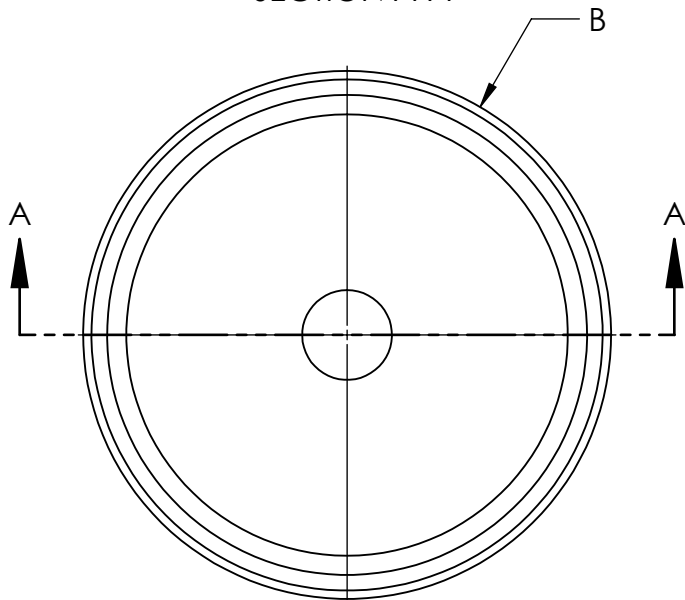
SIZE | DRAWING NUMBER
A | **801D001**

FOR REFERENCE ONLY

SHEET 1 OF 1



SECTION A-A



ISOMETRIC VIEW

PART # SS 304	PART # SS 316	Volume (Gallons)	A	B	C	D	E
8010006	8010007-316SS	0.2	3.91	4.38	2.98	0.03	0.05
8010014	8010015-316SS	0.8	6.25	7.25	4.51	0.04	0.07
8010022	8010023-316SS	1.5	8.85	10.02	2.80	0.04	0.07
8010030	-	3.0	8.85	10.02	8.50	0.04	0.07
8010038	8010039-316SS	4.9	11.85	13.00	7.10	0.04	0.07
8010046	-	6.7	11.85	13.00	10.77	0.04	0.07
8010054	8010055-316SS	6.4	14.00	15.13	5.90	0.04	0.07
8010062	-	10.5	14.00	15.13	11.72	0.04	0.07
8010070	8010071-316SS	7.3	16.00	17.26	3.29	0.04	0.07
8010078	-	12.0	16.00	17.26	8.80	0.04	0.07
8010086	8010087-316SS	14.7	19.93	21.19	4.33	0.04	0.07
8010094	-	21.0	19.93	21.19	9.23	0.04	0.07
8010102	-	23.0	21.09	22.50	8.33	0.04	0.07
8010110	8010111-316SS	25.5	24.00	25.25	5.31	0.04	0.07
8010118	-	30.5	24.00	25.25	8.41	0.04	0.07
8010126	8010127-316SS	33.0	31.83	N/A	1.00	0.06	0.09
8010134	8010135-316SS	51.1	36.06	N/A	1.00	0.06	0.09

NOTES UNLESS OTHERWISE SPECIFIED

1. FINISH: AS PRODUCED FROM FORMING PROCESSES.
2. PART IS SEAMLESS, FORMED FROM SHEET METAL CONTAINING NO WELDS.
3. PART 8010134, 8010135, 8010126, & 8010127 HAS NO FLANGE.
4. ALL HOPPERS CAN HAVE A ROLLED AND WELDED CYLINDER ADDED TO INCREASE THE STRAIGHT WALL LENGTH, WITH OR WITHOUT A FLANGE.
5. DIMENSIONS ARE IN INCHES.
6. NO SHARP EDGES OR BURRS.

Request a quote online at
www.toledometal spinning.com
 or contact sales at 419-214-3245 or
sales@toledometal spinning.com

TOLEDO METAL SPINNING EST. 1929

TITLE:

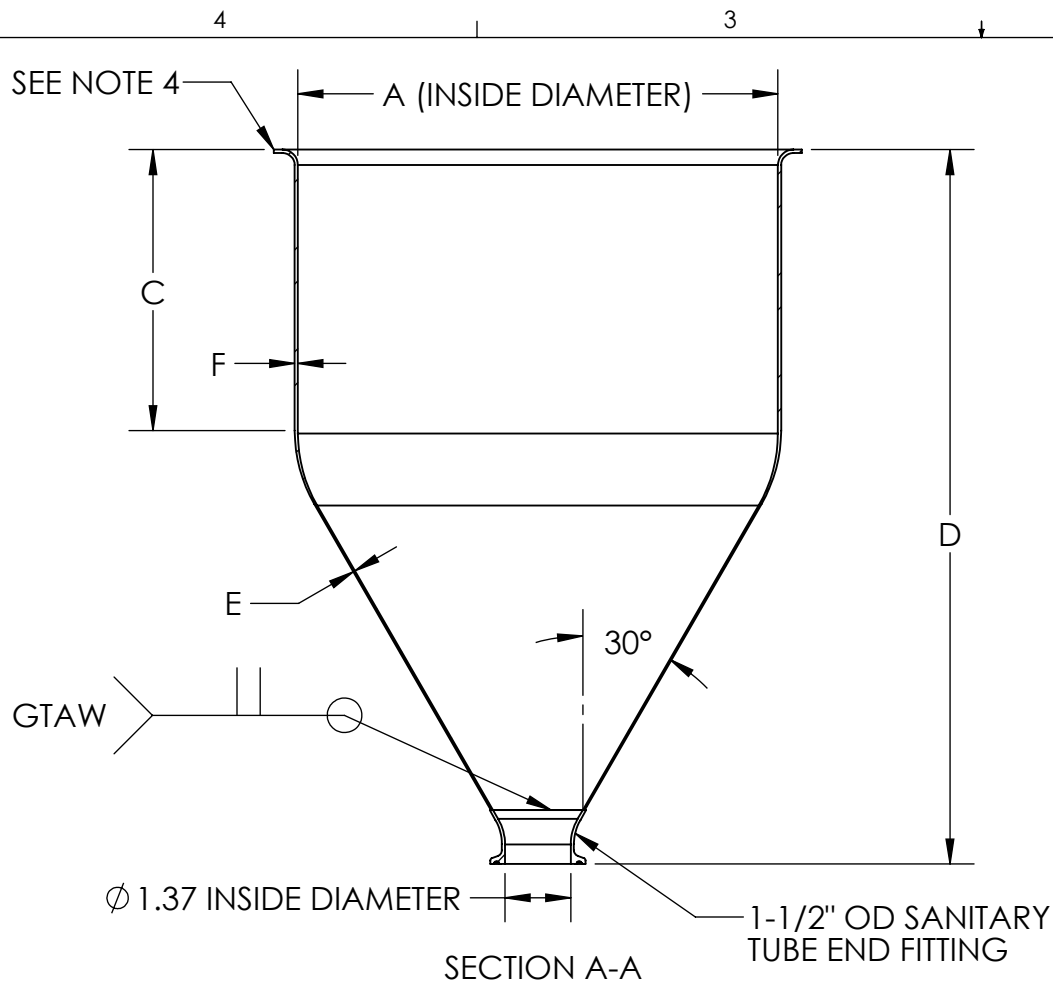
SEAMLESS STAINLESS STEEL
 FABRICATION READY HOPPERS

SIZE | DRAWING NUMBER

A | **801D009**

FOR REFERENCE ONLY

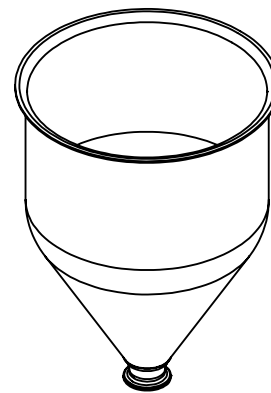
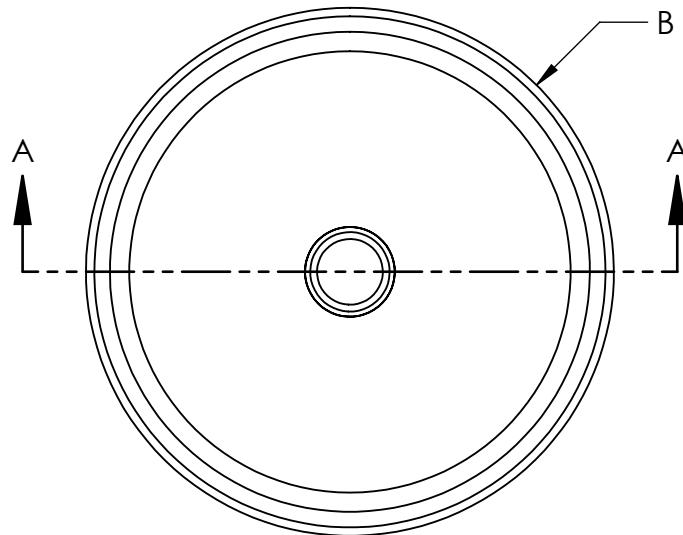
SHEET 1 OF 1



PART # SS 304	PART # SS 316	OLD PART #	Volume (Gallons)	A	B	C	D	E	F
<u>104000</u>	<u>105000</u>	TMS4316	0.2	3.91	4.38	2.98	5.9	0.03	0.05
<u>104001</u>	<u>105001</u>	TMS6414	0.8	6.25	7.25	4.51	9.7	0.04	0.07
<u>104002</u>	<u>105002</u>	TMS9314	1.5	8.85	10.02	2.80	10.2	0.04	0.07
<u>104003</u>	-	TMS9914	3.0	8.85	10.02	8.50	15.9	0.04	0.07
<u>104004</u>	<u>105004</u>	TMS12714	4.9	11.85	13.00	7.10	17.1	0.04	0.07
<u>104005</u>	-	TMS121114	6.7	11.85	13.00	10.77	20.7	0.04	0.07
<u>104006</u>	<u>105006</u>	TMS14514	6.4	14.00	15.13	5.90	17.7	0.04	0.07
<u>104007</u>	-	TMS141214	10.5	14.00	15.13	11.72	23.4	0.04	0.07
<u>104008</u>	<u>105008</u>	TMS16314	7.3	16.00	17.26	3.29	17.2	0.04	0.07
<u>104009</u>	-	TMS16914	12.0	16.00	17.26	8.80	22.7	0.04	0.07
<u>104010</u>	<u>105010</u>	TMS20514	14.7	19.93	21.19	4.33	21.9	0.04	0.07
<u>104011</u>	-	TMS201014	21.0	19.93	21.19	9.23	26.4	0.04	0.07
<u>104012</u>	-	TMS221014	23.0	21.09	22.50	8.33	22.0	0.04	0.07
<u>104013</u>	<u>105013</u>	TMS24614	25.5	24.00	25.25	5.31	26.4	0.04	0.07
<u>104014</u>	-	TMS24914	30.5	24.00	25.25	8.41	29.4	0.04	0.07
<u>104015</u>	<u>105015</u>	TMS32111	33.0	31.83	N/A	1.00	27.0	0.06	0.09
<u>104016</u>	<u>105016</u>	TMS36111	51.1	36.06	N/A	1.00	30.6	0.06	0.09

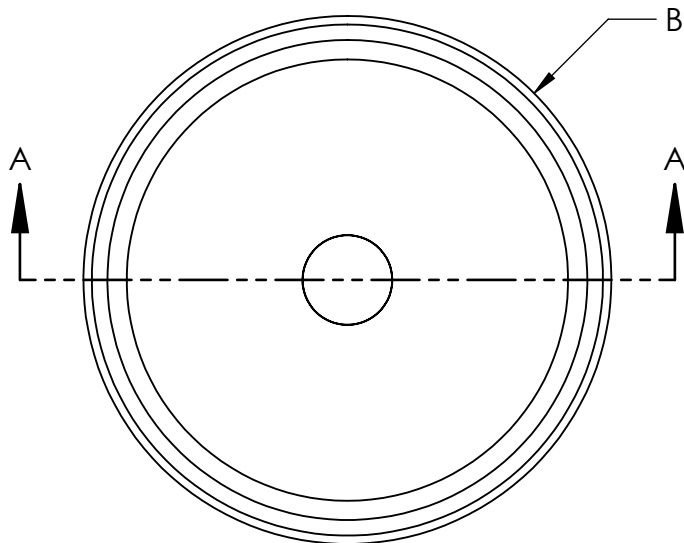
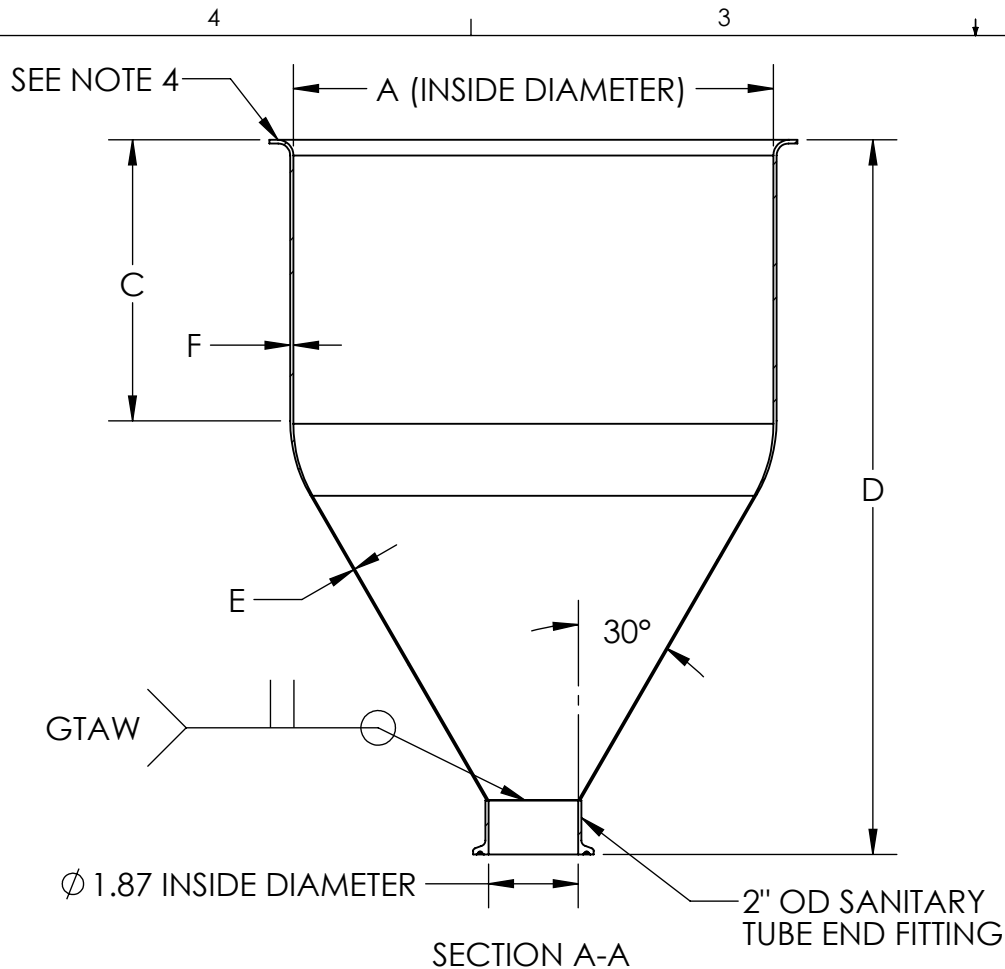
NOTES UNLESS OTHERWISE SPECIFIED

- HOPPER IS SEAMLESS, FORMED FROM STAINLESS STEEL SHEET METAL CONTAINING NO WELDS.
- INSIDE FINISH: BRUSHED FINISH TO 32 Ra.
- OUTSIDE FINISH: BRUSHED FINISH TO 125 Ra.
- PART # 104016, 105016, 104015, & 105015 HAS NO FLANGE.
- ALL HOPPERS CAN HAVE A ROLLED AND WELDED CYLINDER ADDED TO INCREASE THE STRAIGHT WALL LENGTH, WITH OR WITHOUT A FLANGE.
- DIMENSIONS ARE IN INCHES.
- NO SHARP EDGES OR BURRS.



Request a quote online at
www.toledometal spinning.com
 or contact sales at 419-214-3245 or
sales@toledometal spinning.com

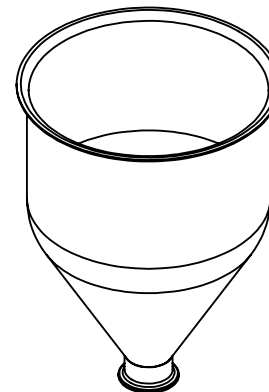
TOLEDO METAL SPINNING EST. 1929	
TITLE: HOPPER WITH WELDED 1.5" TUBE FITTING	
SIZE A	DRAWING NUMBER 801D002
FOR REFERENCE ONLY	
SHEET 1 OF 1	



PART # SS 304	PART # SS 316	OLD PART #	Volume (Gallons)	A	B	C	D	E	F
106000	107000	TMS4316	0.2	3.91	4.38	2.98	5.9	0.03	0.05
106001	107001	TMS6414	0.8	6.25	7.25	4.51	9.7	0.04	0.07
106002	107002	TMS9314	1.5	8.85	10.02	2.80	10.2	0.04	0.07
106003	-	TMS9914	3.0	8.85	10.02	8.50	10.2	0.04	0.07
106004	107004	TMS12714	4.9	11.85	13.00	7.10	17.1	0.04	0.07
106005	-	TMS121114	6.7	11.85	13.00	10.77	20.7	0.04	0.07
106006	107006	TMS14514	6.4	14.00	15.13	5.90	17.7	0.04	0.07
106007	-	TMS141214	10.5	14.00	15.13	11.72	23.4	0.04	0.07
106008	107008	TMS16314	7.3	16.00	17.26	3.29	17.2	0.04	0.07
106009	-	TMS16914	12.0	16.00	17.26	8.80	22.7	0.04	0.07
106010	107010	TMS20514	14.7	19.93	21.19	4.33	21.9	0.04	0.07
106011	-	TMS201014	21.0	19.93	21.19	9.23	26.4	0.04	0.07
106012	-	TMS221014	23.0	21.09	22.50	8.33	22.0	0.04	0.07
106013	107013	TMS24614	25.5	24.00	25.25	5.31	26.4	0.04	0.07
106014	-	TMS24914	30.5	24.00	25.25	8.41	29.4	0.04	0.07
106015	107015	TMS32111	33.0	31.83	N/A	1.00	27.0	0.06	0.09
106016	107016	TMS36111	51.1	36.06	N/A	1.00	30.6	0.06	0.09

NOTES UNLESS OTHERWISE SPECIFIED

- HOPPER IS SEAMLESS, FORMED FROM STAINLESS STEEL SHEET METAL CONTAINING NO WELDS.
- INSIDE FINISH: BRUSHED FINISH TO 32 Ra.
- OUTSIDE FINISH: BRUSHED FINISH TO 125 Ra.
- PART # 106016, 107016, 106015, & 107015 HAS NO FLANGE.
- ALL HOPPERS CAN HAVE A ROLLED AND WELDED CYLINDER ADDED TO STRAIGHT WALL LENGTH, WITH OR WITHOUT A FLANGE.
- DIMENSIONS ARE IN INCHES.
- NO SHARP EDGES OR BURRS.



Request a quote online at
www.toledometal spinning.com
 or contact sales at 419-214-3245 or
sales@toledometal spinning.com

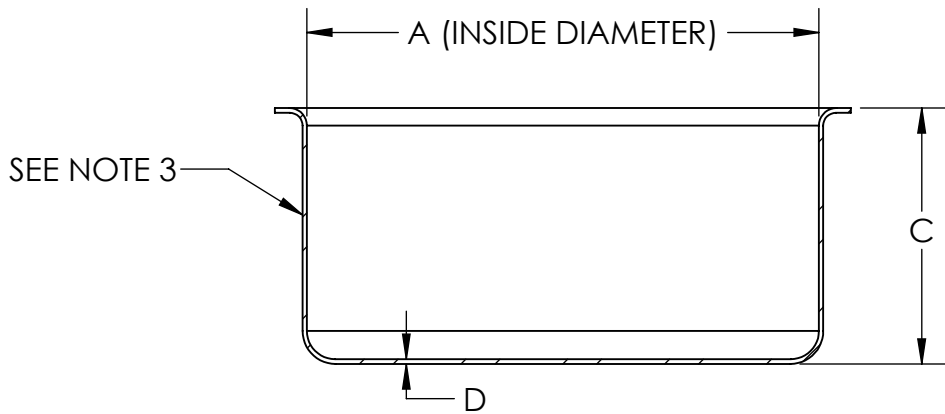
TOLEDO METAL SPINNING EST. 1929

TITLE:
 HOPPER WITH WELDED 2" TUBE FITTING

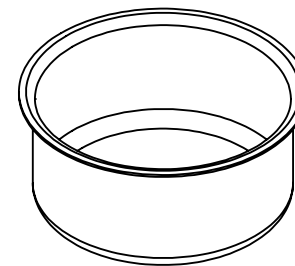
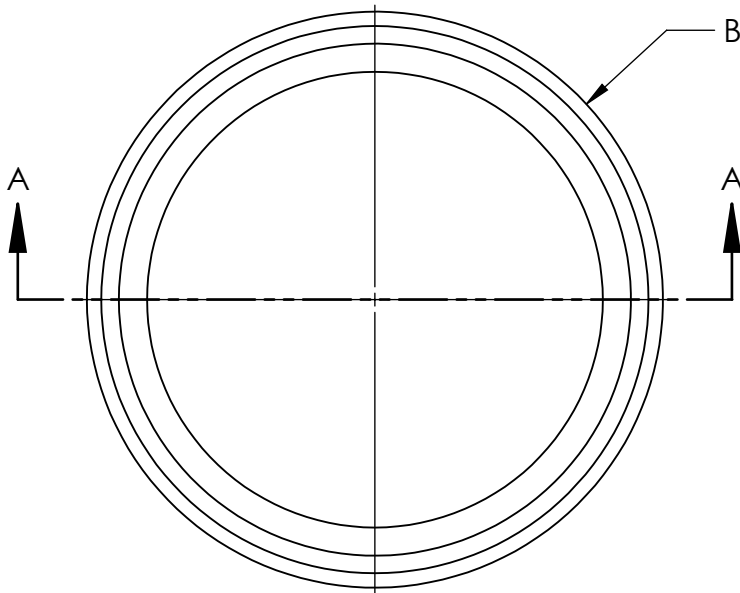
SIZE | DRAWING NUMBER
 A | **801D003**

FOR REFERENCE ONLY

SHEET 1 OF 1



SECTION A-A



PART # SS 304	PART # SS 316	VOLUME (GALLONS)	A	B	C	D
TMSCUP4316	TMSCUP4316-316SS	0.2	3.88	4.38	3.25	0.06
TMSCUP6414	TMSCUP6414-316SS	0.7	6.25	7.25	4.95	0.07
TMSCUP8414	TMSCUP8414-316SS	0.9	8.00	9.00	4.00	0.07
TMSCUP9314	TMSCUP9314-316SS	1.2	8.85	10.02	3.60	0.07
TMSCUP9914	TMSCUP9914-316SS	2.5	8.85	10.02	9.44	0.07
TMSCUP10514	TMSCUP10514-316SS	1.7	10.00	11.00	5.13	0.07
TMSCUP12714	TMSCUP12714-316SS	3.5	11.83	13.00	7.38	0.07
TMSCUP121114	TMSCUP121114-316SS	5.3	11.85	13.00	11.63	0.07
TMSCUP14514	TMSCUP14514-316SS	4.1	14.00	15.13	6.375	0.07
TMSCUP141214	TMSCUP141214-316SS	8.3	14.00	15.13	12.46	0.07
TMSCUP16314	TMSCUP16314-316SS	7.4	16.08	17.26	4.60	0.07
TMSCUP201014	TMSCUP201014-316SS	13.3	19.93	21.19	10.00	0.07
TMSCUP221014	TMSCUP221014-316SS	15.6	21.38	22.50	10.13	0.07
TMSCUP24614	TMSCUP24614-316SS	15.5	24.00	25.25	6.75	0.07

NOTES UNLESS OTHERWISE SPECIFIED

- PART IS SEAMLESS, FORMED FROM SHEET METAL CONTAINING NO WELDS.
- FINISH: AS PRODUCED FROM FORMING PROCESSES.
- STRAIGHT WALL THICKNESS IS +/- 10% OF DIMENSION D.
- DIMENSIONS ARE IN INCHES.
- NO SHARP EDGES OR BURRS.

Request a quote online at
www.toledometalsspining.com
 or contact sales at 419-214-3245 or
sales@toledometalsspining.com

TOLEDO METAL SPINNING EST. 1929	
TITLE: SEAMLESS STAINLESS STEEL FLANGED CUPS	
SIZE A	DRAWING NUMBER 801D004
FOR REFERENCE ONLY	
SHEET 1 OF 1	

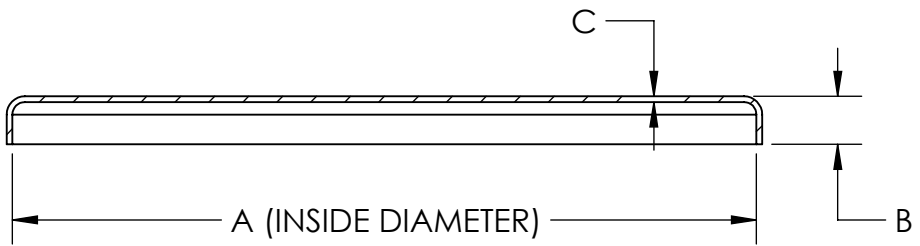
4

3

2

1

PART # SS 304	PART #	A	B	C
TMSL616	TMSL616-316SS	7.75	0.50	0.06
TMSL916	TMSL916-316SS	10.13	0.50	0.06
TMSL1216	TMSL1216-316SS	13.13	0.75	0.06
TMSL1416	TMSL1416-316SS	15.50	0.75	0.06
TMSL1616	TMSL1616-316SS	17.55	0.75	0.06
TMSL2016	TMSL2016-316SS	21.42	0.75	0.06
TMSL2216	TMSL2216-316SS	23.00	0.75	0.06
TMSL2416	TMSL2416-316SS	25.97	0.75	0.06
TMSL3616	TMSL3616-316SS	36.43	1.00	0.06

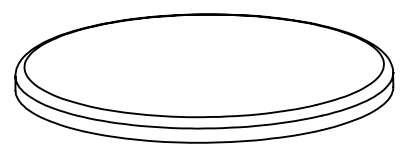
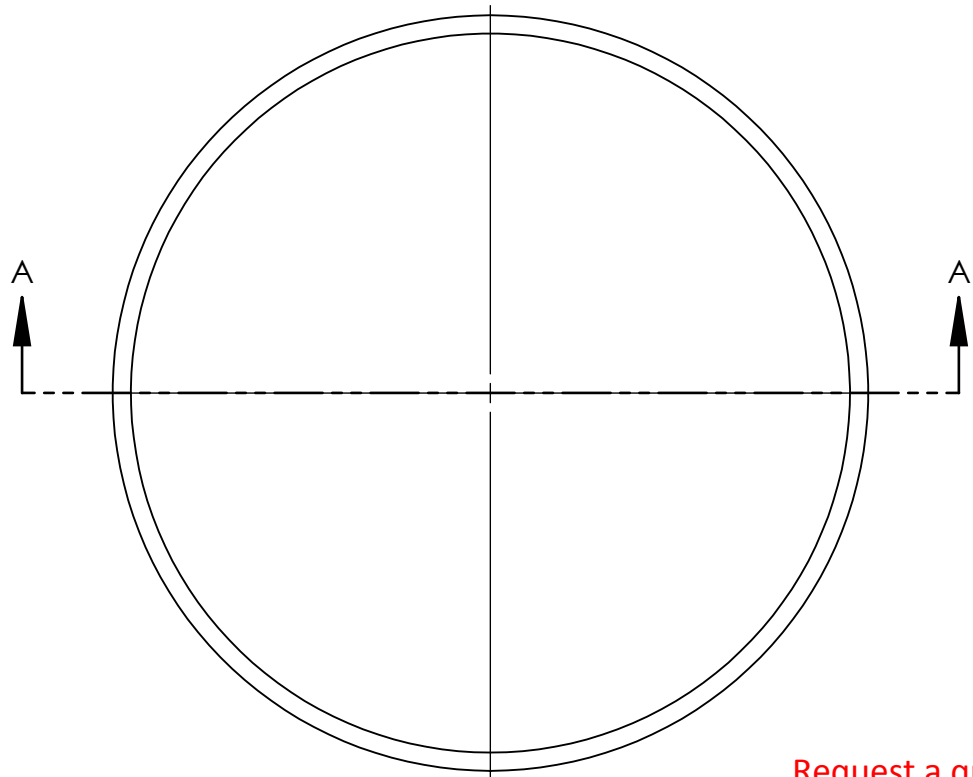


A (INSIDE DIAMETER)

SECTION A-A

NOTES UNLESS OTHERWISE SPECIFIED

- PART IS SEAMLESS, FORMED FROM SHEET METAL CONTAINING NO WELDS.
- FINISH: AS PRODUCED FROM FORMING PROCESSES.
- DIMENSIONS ARE IN INCHES.
- NO SHARP EDGES OR BURRS.



Request a quote online at
www.toledometal spinning.com
 or contact sales at 419-214-3245 or
sales@toledometal spinning.com

TOLEDO METAL SPINNING EST. 1929	
TITLE: STAINLESS STEEL FLAT LIDS	
SIZE A	DRAWING NUMBER 801D005
FOR REFERENCE ONLY	
SHEET 1 OF 1	

4

3

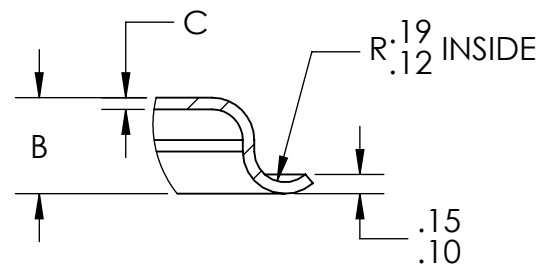
2

1

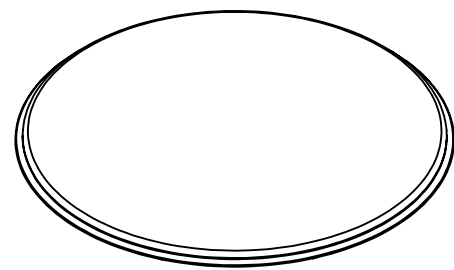
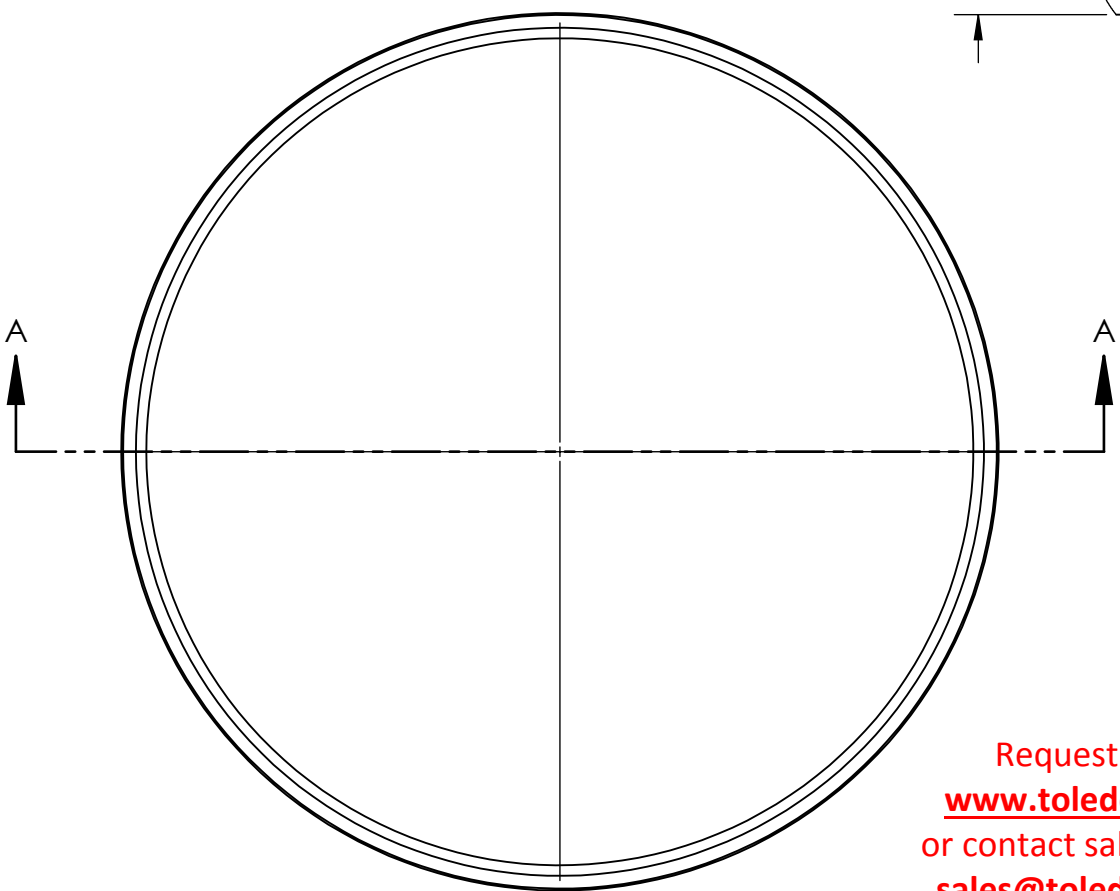
PART # SS 304	PART # SS 316	A	B	C
TMSL616-BEADED	TMSL616-316SS-BEADED	7.75	0.50	0.06
TMSL916-BEADED	TMSL916-316SS-BEADED	10.13	0.50	0.06
TMSL1216-BEADED	TMSL1216-316SS-BEADED	13.13	0.75	0.06
TMSL1416-BEADED	TMSL1416-316SS-BEADED	15.50	0.75	0.06
TMSL1616-BEADED	TMSL1616-316SS-BEADED	17.55	0.75	0.06
TMSL2016-BEADED	TMSL2016-316SS-BEADED	21.42	0.75	0.06
TMSL2216-BEADED	TMSL2216-316SS-BEADED	23.00	0.75	0.06
TMSL2416-BEADED	TMSL2416-316SS-BEADED	25.97	0.75	0.06
TMSL3616-BEADED	TMSL3616-316SS-BEADED	36.43	1.00	0.06



A (INSIDE DIAMETER)
SECTION A-A



DETAIL H



NOTES UNLESS OTHERWISE SPECIFIED

- PART IS SEAMLESS, FORMED FROM SHEET METAL CONTAINING NO WELDS.
- FINISH: AS PRODUCED FROM FORMING PROCESSES.
- DIMENSIONS ARE IN INCHES.
- NO SHARP EDGES OR BURRS.

Request a quote online at
www.toledometal spinning.com
 or contact sales at 419-214-3245 or
sales@toledometal spinning.com

TOLEDO METAL SPINNING EST. 1929	
TITLE: STAINLESS STEEL SEAMLESS BEADED LIDS	
SIZE A	DRAWING NUMBER 801D006
FOR REFERENCE ONLY	
SHEET 1 OF 1	

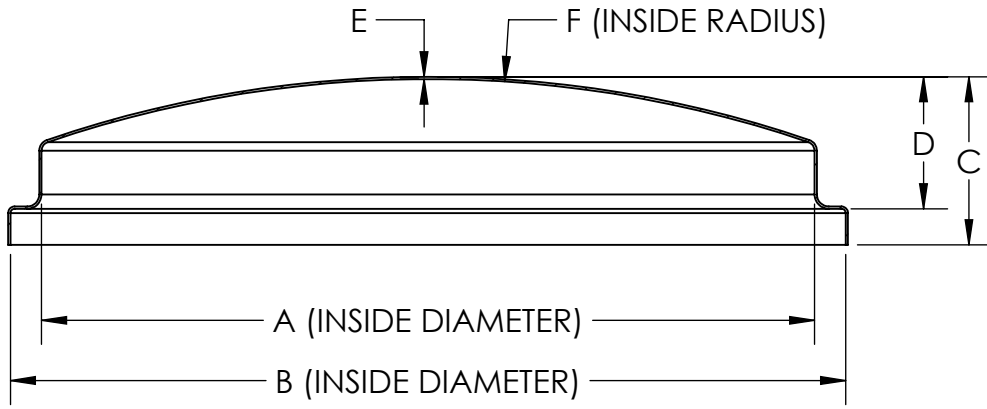
4

3

2

1

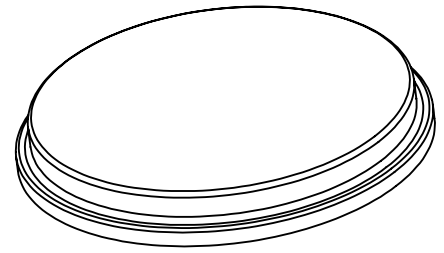
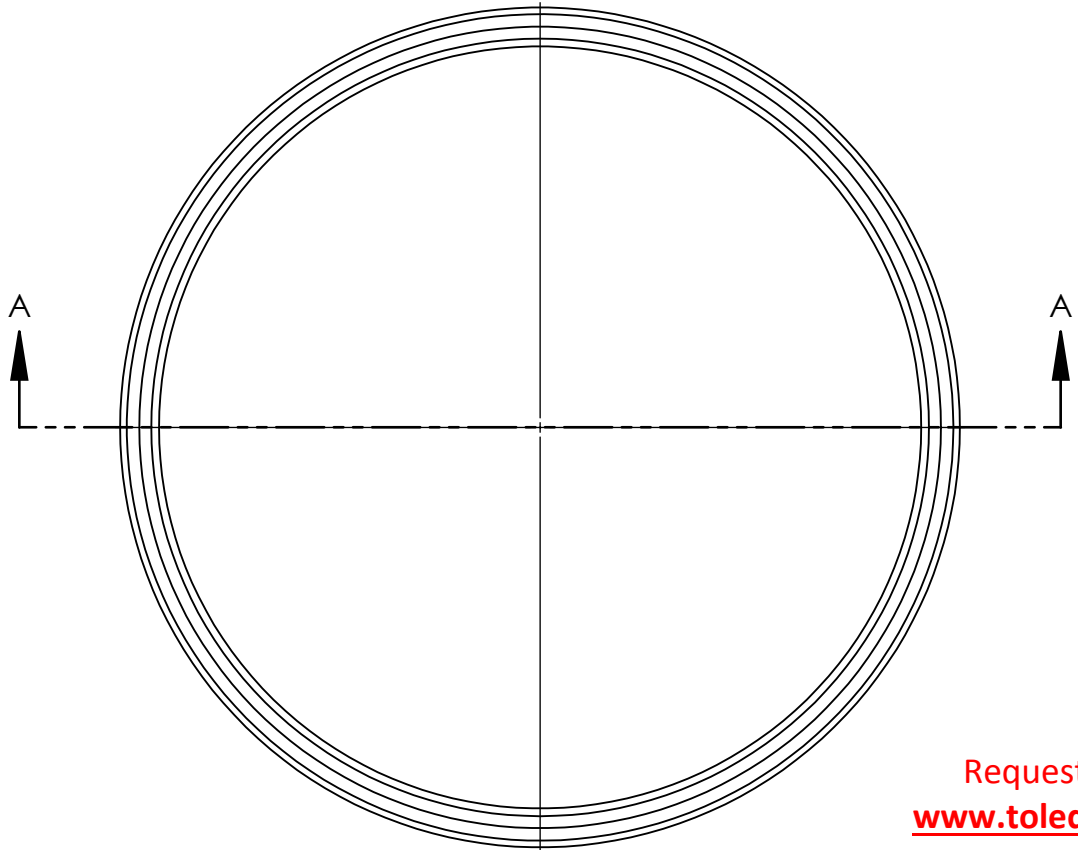
PART # SS 304	PART # SS 316	A	B	C	D	E	F
TMSLD1618	TMSLD1618-316SS	16.10	17.40	3.50	2.7	0.048	24.53
TMSLD2418	TMSLD2418-316SS	23.92	25.32	5.20	4.40	0.048	27.00



SECTION A-A

NOTES UNLESS OTHERWISE SPECIFIED

1. PART IS SEAMLESS, FORMED FROM SHEET METAL CONTAINING NO WELDS.
2. FINISH: AS PRODUCED FROM FORMING PROCESSES.
3. DIMENSIONS ARE IN INCHES.
4. NO SHARP EDGES OR BURRS.



Request a quote online at
www.toledometal spinning.com
 or contact sales at 419-214-3245 or
sales@toledometal spinning.com

TOLEDO METAL SPINNING EST. 1929	
TITLE: STAINLESS STEEL SEAMLESS DOMED LIDS	
SIZE A	DRAWING NUMBER 801D007
FOR REFERENCE ONLY	
SHEET 1 OF 1	

D

C

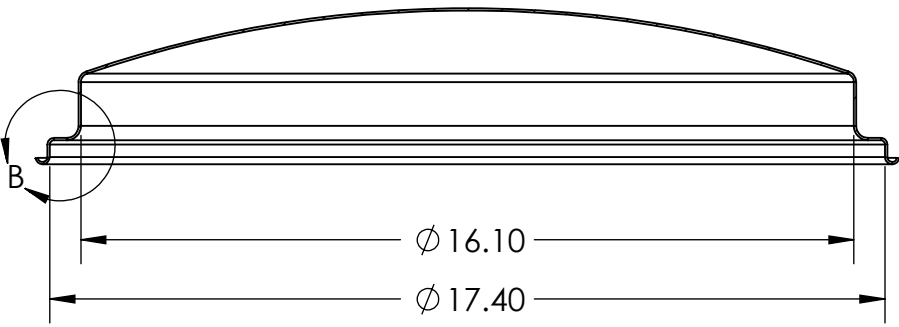
B

A

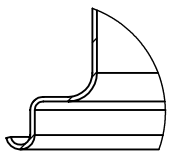
PART # SS 304	Part # SS 316	A	B	C	D	E	F
TMSLD1618-BEADED	TMSLD1618-316SS-BEADED	16.10	17.40	3.50	2.7	0.048	24.53
TMSLD2418-BEADED	TMSLD2418-316SS-BEADED	23.92	25.32	5.20	4.40	0.048	27.00

NOTES UNLESS OTHERWISE SPECIFIED

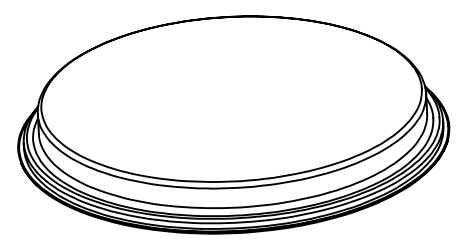
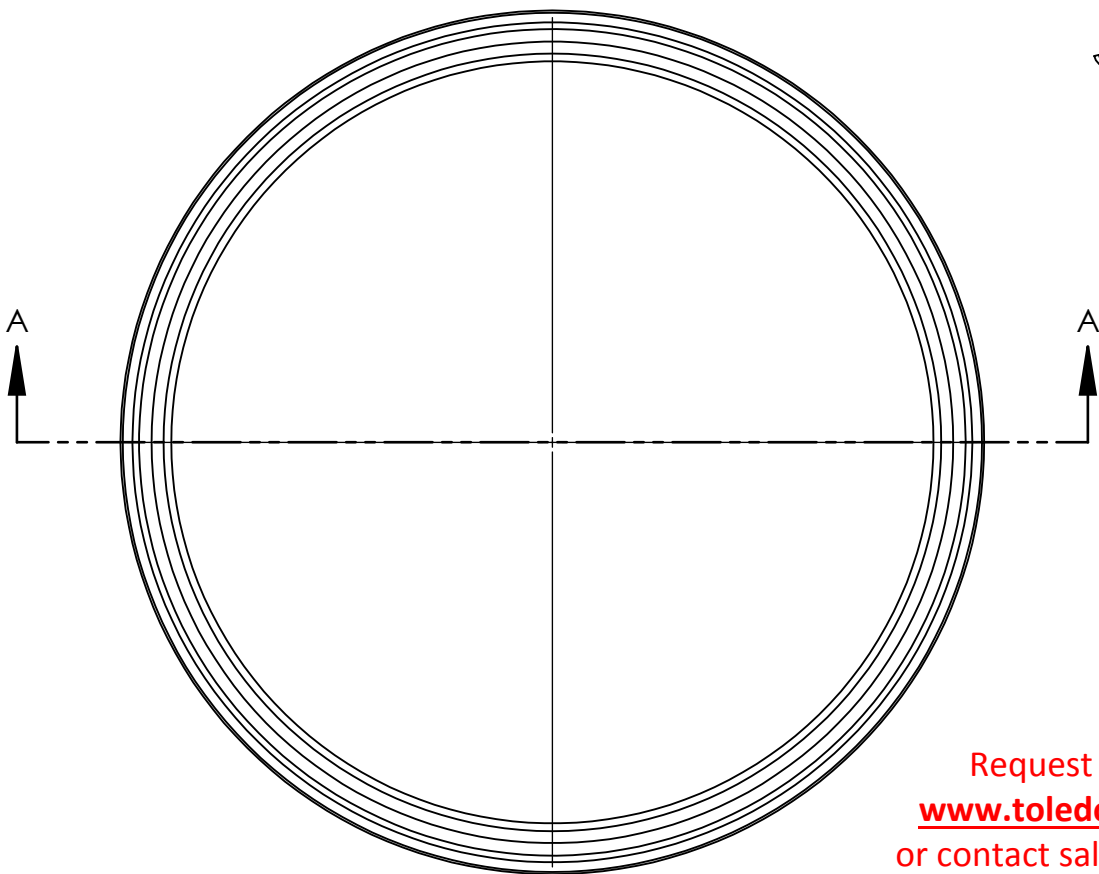
- PART IS SEAMLESS, FORMED FROM SHEET METAL CONTAINING NO WELDS.
- FINISH: AS PRODUCED FROM FORMING PROCESSES.
- DIMENSIONS ARE IN INCHES.
- NO SHARP EDGES OR BURRS.



SECTION A-A



DETAIL B



Request a quote online at
www.toledometal spinning.com
 or contact sales at 419-214-3245 or
sales@toledometal spinning.com

TOLEDO METAL SPINNING EST. 1929	
TITLE: STAINLESS STEEL SEAMLESS DOME BEADED LIDS	
SIZE A	DRAWING NUMBER 801D008
FOR REFERENCE ONLY	
SHEET 1 OF 1	